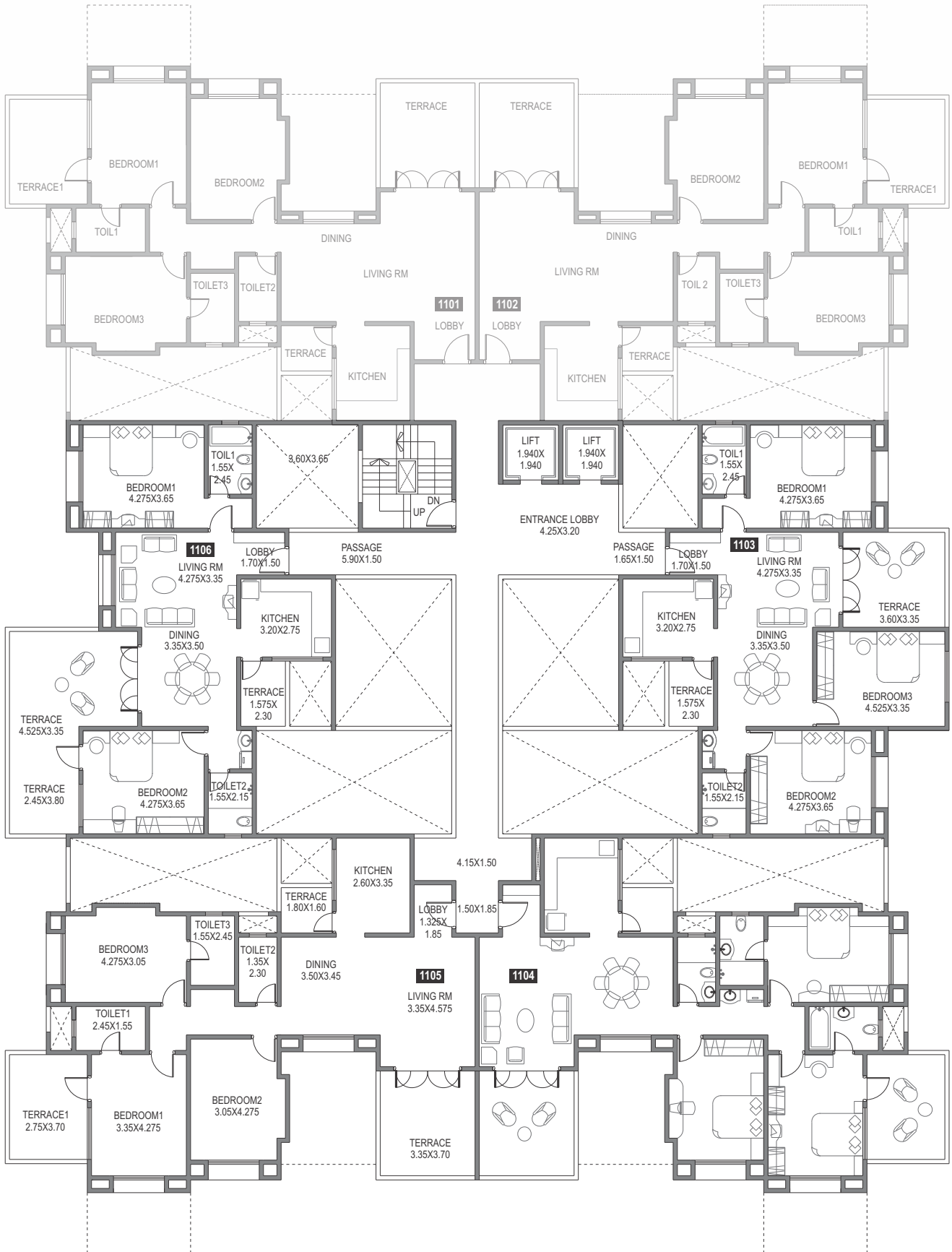


SAIRANG

3 BHK Terrace Apartment



11TH FLOOR PLAN



Area Statement In Sq.m.

FLAT NO.	TYPE	CARPET AREA	TERRACE
1103	3 BHK	96.322	15.683
1104,1105	3 BHK	98.866	25.450
1106	2 BHK	81.164	28.091

Conversion Factor of Sq.Meter to Sq.feet is 10.764



Specifications

- Jet black granite kitchen platform with S S Sink
- Vitrified Flooring For the entire flat
- Coloured Dada tiles in all toilets up to lental level
- Aluminum powder coated sliding window with M. S. grills
- Main door with veneer finish on both sides
- Concealed wiring in all over the flat
- Concealed plumbing in toilets
- Telephone & T.V. points in living and bedroom
- Provision for aqua guard in kitchen
- Provision for exhaust fan in kitchen & toilets

Amenities

- Indoor Swimming Pool
- Club House
- Gym
- Landscaped Gardens
- Play Area for kids
- Impressive Entrance Lobby
- Two level car parking.



Location Map



Corporate Office :

'PSC House', Dr. Ketkar Marg, Off Prabhat Road, Erandawane,
Pune - 411 004. Call : +91 20 3939 4949 www.pscl.in